

 4  4  2



Beechwood Close, *Ascot*

OSBORNE HEATH

An extended four bedroom, two bathroom semi-detached family home with a south facing garden, driveway and garage storage located in a quite cul-de-sac.

On the ground floor there is a living room, study, family room, kitchen with dining space, utility room and a downstairs WC.

The first floor has the principal bedroom with a built-in wardrobe, en suite and a Juliet balcony, three further bedrooms and a family bathroom.

Outside the property has a driveway, garage for storage, and side access to the south facing garden.

Beechwood Close is a small cul-de-sac close to Ascot Racecourse and Ascot Heath Infant & Primary School. Other nearby schools include Charters, Cheapside, Cranbourne, LVS, Papplewick and St Francis. The nearest train station is Ascot where services run to London Waterloo, Reading and Guildford. By road Ascot is convenient for the M3, M4, M25 and Heathrow Airport. Other than Ascot Racecourse other local places of interest include Coworth Park, The Berkshire Golf Club, Guards Polo Club, Legoland, Sunningdale Golf Club, Wentworth Club, Windsor Castle and Windsor Great Park.

EPC rating C. Council Tax band D.





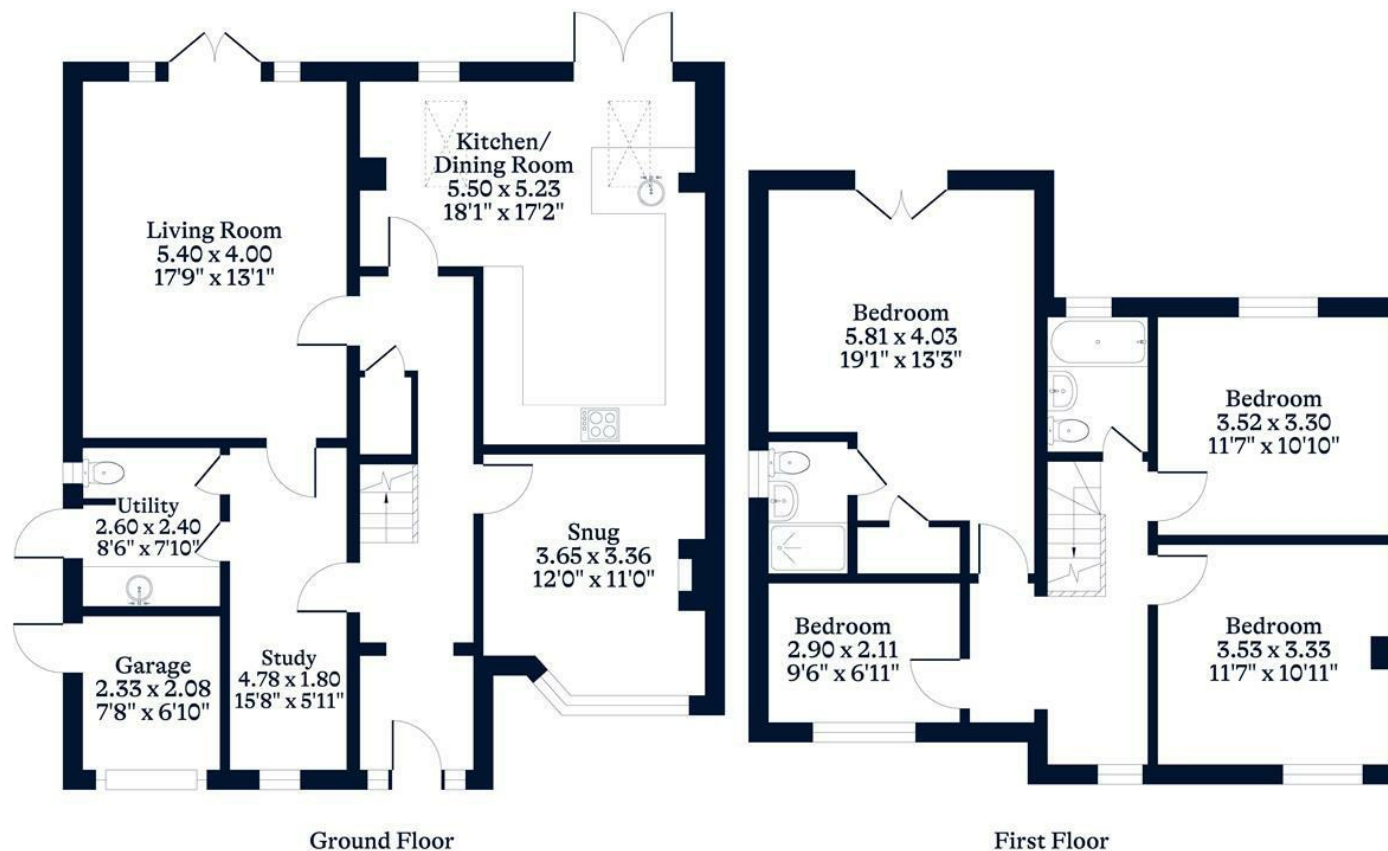
APPROXIMATE FLOOR AREA

House - 157.14 sq m - 1691 sq ft
Garage - 4.84 sq m - 52 sq ft
Total - 161.98 sq m - 1743 sq ft
(Gross Internal Area)

O
|
H

NOT TO SCALE

This plan is for illustration purposes only



This plan is for layout guidance only. Not drawn to scale unless stated. Windows and door openings are approximate. Whilst every care is taken in the preparation of this plan, please check all dimensions, shapes and compass bearings before making any decisions reliant upon them.

OSBORNEHEATH.CO.UK